



Data Sheet



Product Category: RF SAW Filter

Part Number	Package	Application	Last Modified
805-RF315.0M-B	5.0 x 5.0 SMD	Remote Control	Jan. 01, 2007

TYPE :
RF SAW Filter



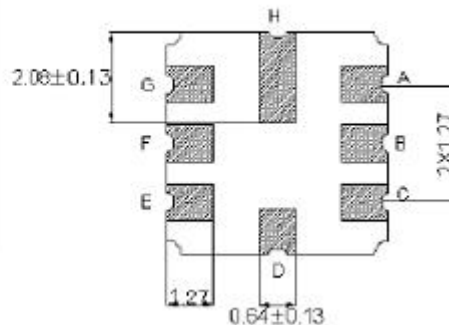
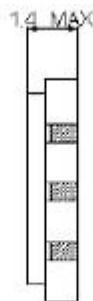
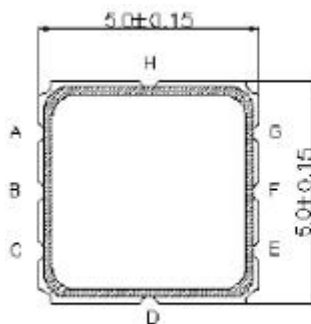
PART NUMBER :
805-RF315.0M-B

OPERATING CONDITIONS / ELECTRICAL CHARACTERISTICS

PARAMETERS	Condition	Minimum	Typical	Maximum	Units
Center Frequency (Fo)	-	-	315.0	-	MHz
Minimum Insertion Loss IL MIN	314.80 ~ 315.20 MHz	-	3.0	5.0	dB
Stop Band Attenuation:	10.0 ~ 270.0 MHz	45	50	-	dB
	270.0 ~ 309.0 MHz	35	40	-	
	309.0 ~ 314.0 MHz	15	20	-	
	316.0 ~ 335.0MHz	10	15	-	
	335.0 ~ 400.0 MHz	35	40	-	
400.0 ~ 1000.0MHz	45	50	-	-	
Passband Relative to IL MIN	314.75 ~ 315.24 MHz	-	1.5	3.0	dB
Passband Relative to IL MIN	314.69 ~ 315.30 MHz-	-	2.0	6.0	
Source Impedance (single ended)*	-	-	50	-	ohm
Load Impedance (single ended)*	-	-	50	-	ohm
Maximum Input Power	-	-	-	0	dBm
Operating Temperature	-	-40	-	+85	°C

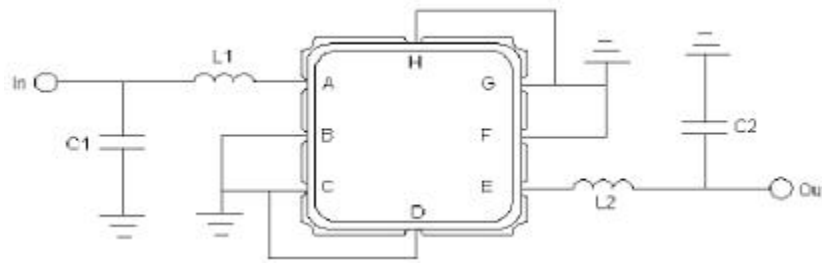
* With Matching Network (Ref. Testing Environment Circuit as shown)

PACKAGE OUTLINE (mm)



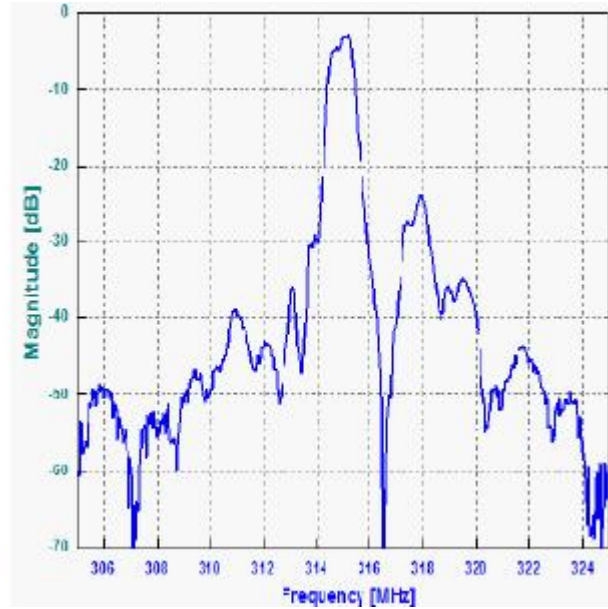
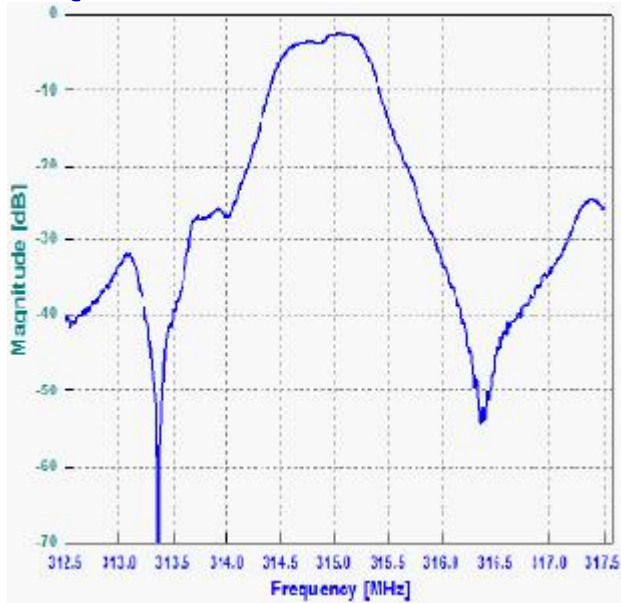
PIN LAYOUT	
A	In
B	Ground
C	Ground
D	Ground
E	Out
F	Ground
G	Ground
H	Ground

TEST FIXTURE



L1 = 82 nH C1 = 5.6pF
 L2 = 82 nH C2 = 5.6pF
 Source/ Load Impedance = 50 ohms

FREQUENCY RESPONSE



Oscilent Corporation - CALL **949.252.0522**

Part No.: 805-RF315.0M-B

18195 East McDermott Street, Building D, Irvine, CA 92614, USA
 Fax: 949.252.0599, E-Mail: Sales@Oscilent.com